



Officials: Jesse Dickerson, Nykesha Thompson, Chuck Gonzalez

**Michigan - 78**

**Record: 16-7 (7-5)**

NO.	Name		Min	FG			3P			FT			Rebounds			Fouls		TP	AS	TO	ST	Blocks		+/-
				M-A	M-A	M-A	M-A	M-A	M-A	M-A	M-A	M-A	OR	DR	TOT	PF	FD					BS	BA	
1	Olivia Olson	G	25:37	3-11	1-1	1-2	0	5	5	4	3	8	1	3	1	0	1	3	1	0	1	0	1	3
3	Mila Holloway	G	29:21	2-7	1-3	1-2	2	1	3	4	2	6	3	5	2	0	1	10				0	1	10
10	Jordan Hobbs	G	33:25	6-15	1-6	1-2	0	10	10	1	4	14	3	0	1	1	0	21				1	0	21
11	Greta Kampschroeder	G	29:01	5-8	5-8	1-2	0	3	3	3	1	16	1	0	1	2	0	19				2	0	19
12	Syla Swords	G	29:42	5-10	1-3	4-4	2	3	5	2	2	15	5	1	0	0	0	12				0	0	12
55	Yulia Grabovskaia		06:51	1-1	0-0	0-0	0	1	1	3	0	2	0	2	0	0	0	2				0	0	2
5	Brooke Q. Daniels		15:24	0-0	0-0	1-1	0	1	1	1	1	1	0	1	1	1	1	10				1	0	10
33	Te'Yala Delfosse		15:22	4-6	0-0	1-1	2	2	4	2	4	9	0	0	0	0	0	24				0	0	24
21	Ally VanTimmeren		06:32	2-2	0-0	2-2	1	1	2	2	1	6	0	0	0	0	0	-1				0	0	-1
2	Macy Brown		04:34	0-0	0-0	1-2	0	2	2	0	1	1	0	1	0	0	0	-5				0	0	-5
20	Alyssa Crockett		04:11	0-0	0-0	0-0	0	0	0	0	0	0	1	0	0	0	0	-5				0	0	-5
Team													2	0	2			0						
Totals					28-60	9-21	13-18	9	29	38	22	19	78	14	13	7	4	2	18					

Technical Fouls: NONE

Shooting By Period		
1 <sup>st</sup> FG%	7-19	36.8%
3PT%	3-6	50.0%
FT%	1-1	100%
2 <sup>nd</sup> FG%	9-14	64.3%
3PT%	1-3	33.3%
FT%	5-5	100%
3 <sup>rd</sup> FG%	6-15	40.0%
3PT%	2-6	33.3%
FT%	2-4	50%
4 <sup>th</sup> FG%	6-12	50.0%
3PT%	3-6	50.0%
FT%	5-8	62.5%
GM FG%	28-60	46.7%
3PT%	9-21	42.9%
FT%	13-18	72.2%

Dead Ball Rebounds: 2, 0

**Nebraska - 60**

**Record: 16-7 (7-5)**

NO.	Name		Min	FG			3P			FT			Rebounds			Fouls		TP	AS	TO	ST	Blocks		+/-
				M-A	M-A	M-A	M-A	M-A	M-A	M-A	M-A	M-A	OR	DR	TOT	PF	FD					BS	BA	
12	Jessica Petrie	F	23:47	3-5	0-0	0-0	1	2	3	1	1	6	1	0	0	0	0	-11				0	0	-11
40	Alexis Markowski	C	30:45	7-16	1-2	6-9	1	10	11	2	8	21	1	2	1	0	1	-14				0	1	-14
14	Callin Hake	G	27:44	2-5	1-2	0-0	0	2	2	2	3	5	5	3	0	0	0	-16				0	0	-16
15	Kendall Moriarty	G	15:36	2-3	0-0	0-2	0	1	1	2	2	4	1	1	0	0	0	3				0	0	3
23	Britt Prince	G	34:57	4-13	0-4	2-3	2	1	3	4	2	10	3	3	1	1	1	-17				1	1	-17
5	Alberte Rimdal		19:23	0-2	0-2	1-2	1	0	1	1	2	1	0	1	1	0	0	-13				0	0	-13
2	Logan Nissley		18:05	1-6	0-3	2-3	2	3	5	0	2	4	0	3	1	0	1	-7				0	1	-7
33	Amiah Hargrove		09:43	0-2	0-0	0-0	1	3	4	2	1	0	0	1	0	0	1	-13				0	0	-13
44	Petra Bozan		05:16	1-4	0-0	2-2	0	0	0	1	1	4	0	1	1	0	0	0				0	0	0
32	Kendall Coley		14:43	2-3	1-2	0-0	2	1	3	4	0	5	1	2	0	1	0	-2				1	0	-2
Team													2	3	5			0						
Totals					22-59	3-15	13-21	12	26	38	19	22	60	12	17	5	2	4	-18					

Technical Fouls: NONE

Shooting By Period		
1 <sup>st</sup> FG%	5-12	41.7%
3PT%	1-2	50.0%
FT%	3-4	75%
2 <sup>nd</sup> FG%	3-16	18.8%
3PT%	1-6	16.7%
FT%	0-0	0%
3 <sup>rd</sup> FG%	8-16	50.0%
3PT%	0-1	0.0%
FT%	5-8	62.5%
4 <sup>th</sup> FG%	6-15	40.0%
3PT%	1-6	16.7%
FT%	5-9	55.6%
GM FG%	22-59	37.3%
3PT%	3-15	20.0%
FT%	13-21	61.9%

Dead Ball Rebounds: 4, 0

	MIC	UNL
Biggest lead	25 (4 <sup>th</sup> 5:37)	2 (1 <sup>st</sup> 9:42)
Best Scoring Run	18 (2 <sup>nd</sup> 5:41)	8 (3 <sup>rd</sup> 8:03)
Lead Changes	9	
Times Tied	1	
Time with Lead	34:06	05:36

	MIC	UNL
Points from		
Turnovers	8	6
Paint	36	32
Second Chance	11	13
Fast Breaks	6	1
Bench	19	14

Period by Period Scoring					
	1st	2nd	3rd	4th	TOT
MIC	18	24	16	20	78
UNL	14	7	21	18	60



Officials: Jesse Dickerson, Nykesha Thompson, Chuck Gonzalez

## Period 1

### Period Starters:

UNL	12 Petrie J	14 Hake C	15 Moriarty K	23 Prince B	40 Markowski A
MIC	1 Olson O	3 Holloway M	10 Hobbs J	11 Kampschroeder G	12 Swords S

Game Time	UNL	Score	Diff	MIC
10:00	40 MARKOWSKI A jumpball won			1 OLSON O jumpball lost
09:42	23 PRINCE B 2pt FG in the paint, turnaround jump shot made (2)	2-0	2	
09:22		2-3	-1	11 KAMPSCHROEDER G 3pt FG , jump shot made (3)
09:22				3 HOLLOWAY Massist (1)
09:08	40 MARKOWSKI A 2pt FG outside the paint, jump shot missed			
09:06				10 HOBBS J defensive rebound (1)
08:41				10 HOBBS J 2pt FG in the paint, jump shot missed
08:39	40 MARKOWSKI A defensive rebound (1)			
08:28	12 PETRIE J 2pt FG outside the paint, turnaround jump shot made (2)	4-3	1	
08:28	14 HAKE C assist (1)			
08:13				1 OLSON O 2pt FG in the paint, jump shot missed
08:10	14 HAKE C defensive rebound (1)			
08:08	14 HAKE C turnover lost ball (1)			11 KAMPSCHROEDER G steal (1)
08:03				3 HOLLOWAY M 3pt FG from turnover, jump shot missed
08:01	12 PETRIE J defensive rebound (1)			
07:41	23 PRINCE B 2pt FG outside the paint, jump shot missed			
07:39				12 SWORDS S defensive rebound (1)
07:27		4-6	-2	10 HOBBS J 3pt FG , jump shot made (3)
07:27				3 HOLLOWAY Massist (2)
07:14	40 MARKOWSKI A 3pt FG , jump shot made (3)	7-6	1	
07:14	14 HAKE C assist (2)			
06:59		7-8	-1	12 SWORDS S 2pt FG in the paint, driving layup made (2)
06:47	40 MARKOWSKI A 2pt FG in the paint, turnaround jump shot made (5)	9-8	1	
06:47	14 HAKE C assist (3)			
06:36		9-10	-1	1 OLSON O 2pt FG in the paint, layup made (2)
06:36				10 HOBBS J assist (1)
06:27	40 MARKOWSKI A foul drawn (1)			1 OLSON O foul shooting (1 - 1)
06:27	14 HAKE C substitution out			
06:27	5 RIMDAL A substitution in			
06:27	40 MARKOWSKI A free throw 1 - 2 made (6)	10-10	0	
06:27	40 MARKOWSKI A free throw 2 - 2 made (7)	11-10	1	
06:12				1 OLSON O 2pt FG in the paint, jump shot missed
06:10	12 PETRIE J defensive rebound (2)			
05:47	23 PRINCE B turnover lost ball (1)			
05:47	15 MORIARTY K substitution out			
05:47	2 NISSLEY L substitution in			
05:47	40 MARKOWSKI A substitution out			
05:47	33 HARGROVE A substitution in			
05:31				12 SWORDS S 2pt FG from turnover outside the paint, turnaround jump shot missed
05:28	33 HARGROVE A defensive rebound (1)			



Official Basketball Playby Play - 1st Period  
**Michigan at Nebraska**  
02/06/25 Pinnacle Bank Arena, Lincoln  
2024-25 Women's Basketball

Game Time: 7:02 PM  
Game Duration: 1:52  
Attendance: 5,617

Officials: Jesse Dickerson, Nykesha Thompson, Chuck Gonzalez

Game Time	UNL	Score	Diff	MIC
05:13	33 HARGROVE A 2pt FG in the paint, jump shot blocked			
05:13				10 HOBBS J block (1)
05:13	33 HARGROVE A offensive rebound (2)			
05:06	33 HARGROVE A 2pt FG second chance in the paint, layup missed			
05:03				12 SWORDS S defensive rebound (2)
04:53				10 HOBBS J 3pt FG , jump shot missed
04:50	2 NISSLEY L defensive rebound (1)			
04:35	33 HARGROVE A turnover 3 seconds (1)			
04:35	Timeout media			
04:35	12 PETRIE J substitution out			
04:35	40 MARKOWSKI A substitution in			
04:35				11 KAMPSCHROEDER G substitution out
04:35				55 GRABOVSKAIA Y substitution in
04:11				12 SWORDS S 2pt FG from turnover outside the paint, jump shot missed
04:08	33 HARGROVE A defensive rebound (3)			
04:08	33 HARGROVE A foul drawn (1)			12 SWORDS S foul personal (1 - 2)
03:54	40 MARKOWSKI A turnover lost ball (1)			10 HOBBS J steal (1)
03:37				55 GRABOVSKAIA Y turnover travel (1)
03:37				10 HOBBS J substitution out
03:37				11 KAMPSCHROEDER G substitution in
03:24	2 NISSLEY L 3pt FG from turnover, jump shot missed			
03:20				1 OLSON O defensive rebound (1)
03:20	33 HARGROVE A foul personal (1 - 1)			1 OLSON O foul drawn (1)
03:20	23 PRINCE B substitution out			
03:20	14 HAKE C substitution in			
03:08				1 OLSON O 2pt FG outside the paint, jump shot missed
03:06	2 NISSLEY L defensive rebound (2)			
02:50	14 HAKE C turnover bad pass (2)			1 OLSON O steal (1)
02:38		11-13	-2	3 HOLLOWAY M 3pt FG from turnover, jump shot made (3)
02:24	40 MARKOWSKI A foul drawn (2)			55 GRABOVSKAIA Y foul shooting (1 - 3)
02:24	33 HARGROVE A substitution out			
02:24	12 PETRIE J substitution in			
02:24	40 MARKOWSKI A free throw 1 - 2 missed			
02:24	offensive dead ball rebound (1)			
02:24	40 MARKOWSKI A free throw 2 - 2 made (8)	12-13	-1	
02:06				1 OLSON O 2pt FG outside the paint, jump shot missed
02:03	2 NISSLEY L defensive rebound (3)			
01:44	2 NISSLEY L turnover lost ball (1)			
01:44				1 OLSON O substitution out
01:44				55 GRABOVSKAIA Y substitution out
01:44				5 Q. DANIELS B substitution in
01:44				10 HOBBS J substitution in
01:44	2 NISSLEY L substitution out			
01:44	5 RIMDAL A substitution out			
01:44	15 MORIARTY K substitution in			
01:44	23 PRINCE B substitution in			
01:29				10 HOBBS J 3pt FG from turnover, jump shot missed
01:27	defensive rebound (11)			



Official Basketball Playby Play - 1st Period  
**Michigan at Nebraska**  
02/06/25 Pinnacle Bank Arena, Lincoln  
2024-25 Women's Basketball

Game Time: 7:02 PM  
Game Duration: 1:52  
Attendance: 5,617

Officials: Jesse Dickerson, Nykesha Thompson, Chuck Gonzalez

Game Time	UNL	Score	Diff	MIC
01:27				12 SWORDS S substitution out
01:27				33 DELFOSSE T substitution in
01:17	23 PRINCE B turnover bad pass (2)			5 Q. DANIELS B steal (1)
01:13				33 DELFOSSE T 2pt FG fast break from turnover in the paint, layup missed
01:11				3 HOLLOWAY M offensive rebound (1)
01:10		12-15	-3	3 HOLLOWAY M 2pt FG from turnover second chance in the paint, layup made (5)
01:01	23 PRINCE B 2pt FG in the paint, jump shot missed			
00:58				10 HOBBS J defensive rebound (2)
00:49				3 HOLLOWAY M 2pt FG in the paint, layup missed
00:47	40 MARKOWSKI A defensive rebound (2)			
00:38	40 MARKOWSKI A 2pt FG in the paint, layup made (10)	14-15	-1	
00:38	15 MORIARTY K assist (1)			
00:19		14-17	-3	10 HOBBS J 2pt FG in the paint, layup made (5)
00:19	15 MORIARTY K foul shooting (1 - 2)			10 HOBBS J foul drawn (1)
00:19				3 HOLLOWAY M substitution out
00:19				1 OLSON O substitution in
00:19	15 MORIARTY K substitution out			
00:19	2 NISSLEY L substitution in			
00:19		14-18	-4	10 HOBBS J free throw 1 - 1 made (6)
00:00	14 HAKE C 2pt FG outside the paint, jump shot missed			
00:00				10 HOBBS J defensive rebound (3)
END OF PERIOD				
UNL 14-18 MIC				



Officials: Jesse Dickerson, Nykesha Thompson, Chuck Gonzalez

Michigan - 18

NO.	Name		Min	FG M-A	3P M-A	FT M-A	Rebounds			Fouls		TP	AS	TO	ST	Blocks		+/-
							OR	DR	TOT	PF	FD					BS	BA	
1	Olivia Olson	G	08:36	1-5	0-0	0-0	0	1	1	1	1	2	0	0	1	0	0	2
3	Mila Holloway	G	09:40	2-4	1-2	0-0	1	0	1	0	0	5	2	0	0	0	0	3
10	Jordan Hobbs	G	08:07	2-5	1-3	1-1	0	3	3	0	1	6	1	0	1	1	0	2
11	Greta Kampschroeder	G	09:02	1-1	1-1	0-0	0	0	0	0	0	3	0	0	1	0	0	4
12	Syla Swords	G	08:33	1-3	0-0	0-0	0	2	2	1	0	2	0	0	0	0	0	1
55	Yulia Grabovskaia		02:51	0-0	0-0	0-0	0	0	0	1	0	0	0	1	0	0	0	2
5	Brooke Q. Daniels		01:44	0-0	0-0	0-0	0	0	0	0	0	0	0	0	1	0	0	3
33	Te'Yala Delfosse		01:27	0-1	0-0	0-0	0	0	0	0	0	0	0	0	0	0	0	3
Team							0	0	0			0		0				
Totals				7-19	3-6	1-1	1	6	7	3	2	18	3	1	4	1	0	4

Shooting By Period		
1st FG%	7-19	36.8%
3PT%	3-6	50.0%
FT%	1-1	100%
GMFG%	7-19	36.8%
3PT%	3-6	50.0%
FT%	1-1	100.0%

Dead Ball Rebounds: 0, 0

Technical Fouls: NONE

Nebraska - 14

NO.	Name		Min	FG M-A	3P M-A	FT M-A	Rebounds			Fouls		TP	AS	TO	ST	Blocks		+/-
							OR	DR	TOT	PF	FD					BS	BA	
12	Jessica Petrie	F	07:49	1-1	0-0	0-0	0	2	2	0	0	2	0	0	0	0	0	-1
40	Alexis Markowski	C	08:48	3-4	1-1	3-4	0	2	2	0	2	10	0	1	0	0	0	-4
14	Callin Hake	G	06:53	0-1	0-0	0-0	0	1	1	0	0	0	3	2	0	0	0	-6
15	Kendall Moriarty	G	05:37	0-0	0-0	0-0	0	0	0	1	0	0	1	0	0	0	0	-1
23	Britt Prince	G	08:24	1-3	0-0	0-0	0	0	0	0	0	2	0	2	0	0	0	-2
5	Alberte Rimdal		04:43	0-0	0-0	0-0	0	0	0	0	0	0	0	0	0	0	0	0
2	Logan Nissley		04:23	0-1	0-1	0-0	0	3	3	0	0	0	0	1	0	0	0	-3
33	Amiah Hargrove		03:23	0-2	0-0	0-0	1	2	3	1	1	0	0	1	0	0	1	-3
Team							0	1	1			0		0				
Totals				5-12	1-2	3-4	1	11	12	2	3	14	4	7	0	0	1	-4

Shooting By Period		
1st FG%	5-12	41.7%
3PT%	1-2	50.0%
FT%	3-4	75%
GMFG%	5-12	41.7%
3PT%	1-2	50.0%
FT%	3-4	75.0%

Dead Ball Rebounds: 1, 0

Technical Fouls: NONE

	MIC	UNL
Biggest lead	4 (1 <sup>st</sup> 0:19)	2 (1 <sup>st</sup> 9:42)
Best Scoring Run	3 (1 <sup>st</sup> 9:22)	3 (1 <sup>st</sup> 7:14)
Lead Changes	9	
Times Tied	1	
Time with Lead	04:06	05:36

Points from	MIC	UNL
Turnovers	5	0
Paint	8	6
Second Chance	2	0
Fast Breaks	0	0
Bench	0	0

Period by Period Scoring					
	1st	2nd	3rd	4th	TOT
MIC	18	24	16	20	78
UNL	14	7	21	18	60



Officials: Jesse Dickerson, Nykesha Thompson, Chuck Gonzalez

## Period 2

### Period Starters:

UNL	2 Nissley L	12 Petrie J	14 Hake C	23 Prince B	40 Markowski A
MIC	1 Olson O	5 Q. Daniels B	10 Hobbs J	11 Kampschroeder G	33 Delfosse T

Game Time	UNL	Score	Diff	MIC
09:47	40 MARKOWSKI A foul drawn (3)			11 KAMPSCHROEDER G foul personal (1 - 1)
09:36	2 NISSLEY L 2pt FG in the paint, jump shot blocked			
09:36				11 KAMPSCHROEDER G block (1)
09:33				10 HOBBS J defensive rebound (4)
09:29		14-20	-6	33 DELFOSSE T 2pt FG fast break in the paint, layup made (2)
09:29				10 HOBBS J assist (2)
09:06	40 MARKOWSKI A 2pt FG in the paint, layup missed			
09:03				11 KAMPSCHROEDER G defensive rebound (1)
08:56		14-22	-8	33 DELFOSSE T 2pt FG in the paint, layup made (4)
08:55	Timeout 30 Sec			
08:55	Timeout media			
08:55	2 NISSLEY L substitution out			
08:55	5 RIMDAL A substitution in			
08:27	23 PRINCE B 3pt FG , jump shot missed			
08:24				1 OLSON O defensive rebound (2)
08:15				10 HOBBS J 2pt FG in the paint, layup missed
08:12	40 MARKOWSKI A defensive rebound (3)			
08:03	40 MARKOWSKI A 3pt FG , jump shot missed			
08:00				1 OLSON O defensive rebound (3)
07:54		14-24	-10	33 DELFOSSE T 2pt FG in the paint, layup made (6)
07:54				1 OLSON O assist (1)
07:31	14 HAKE C 2pt FG in the paint, layup missed			
07:29				11 KAMPSCHROEDER G defensive rebound (2)
07:25		14-26	-12	10 HOBBS J 2pt FG fast break in the paint, layup made (8)
07:25				11 KAMPSCHROEDER G assist (1)
06:59	40 MARKOWSKI A 2pt FG in the paint, jump shot missed			
06:58				10 HOBBS J defensive rebound (5)
06:58	12 PETRIE J substitution out			
06:58	40 MARKOWSKI A substitution out			
06:58	33 HARGROVE A substitution in			
06:58	44 BOZAN P substitution in			
06:58				5 Q. DANIELS B substitution out
06:58				11 KAMPSCHROEDER G substitution out
06:58				33 DELFOSSE T substitution out
06:58				3 HOLLOWAY M substitution in
06:58				12 SWORDS S substitution in
06:58				55 GRABOVSKAIA Y substitution in
06:42		14-28	-14	55 GRABOVSKAIA Y 2pt FG in the paint, layup made (2)
06:42				12 SWORDS S assist (1)
06:33	44 BOZAN P turnover bad pass (1)			
06:17		14-30	-16	12 SWORDS S 2pt FG from turnover in the paint, layup made (4)
05:51	44 BOZAN P 2pt FG outside the paint, jump shot missed			



Official Basketball Play by Play - 2nd Period

**Michigan at Nebraska**02/06/25 Pinnacle Bank Arena, Lincoln  
2024-25 Women's Basketball

Game Time: 7:02 PM

Game Duration: 1:52

Attendance: 5,617

Officials: Jesse Dickerson, Nykesha Thompson, Chuck Gonzalez

Game Time	UNL	Score	Diff	MIC
05:47				55 GRABOVSKAIA Y defensive rebound (1)
05:41		14-33	-19	1 OLSON O 3pt FG , jump shot made (5)
05:41				3 HOLLOWAY Massist (3)
05:38	Timeout 30 Sec			
05:38	14 HAKE C substitution out			
05:38	32 COLEY K substitution in			
05:26				10 HOBBS J substitution out
05:26				11 KAMPSCHROEDER G substitution in
05:14	5 RIMDAL A turnover travel (1)			
05:14	44 BOZAN P substitution out			
05:14	40 MARKOWSKI A substitution in			
04:58				1 OLSON O 2pt FG from turnover in the paint, layup missed
04:55	40 MARKOWSKI A defensive rebound (4)			
04:55	40 MARKOWSKI A foul drawn (4)			1 OLSON O foul personal (2 - 2)
04:55	5 RIMDAL A substitution out			
04:55	15 MORIARTY K substitution in			
04:55				1 OLSON O substitution out
04:55				55 GRABOVSKAIA Y substitution out
04:55				5 Q. DANIELS B substitution in
04:55				10 HOBBS J substitution in
04:44	23 PRINCE B 2pt FG outside the paint, jump shot made (4)	16-33	-17	
04:28				3 HOLLOWAY M 2pt FG in the paint, jump shot blocked
04:28	23 PRINCE B block (1)			
04:28				3 HOLLOWAY M offensive rebound (2)
04:28	23 PRINCE B foul personal (1 - 1)			3 HOLLOWAY M foul drawn (1)
04:17	32 COLEY K foul shooting (1 - 2)			12 SWORDS S foul drawn (1)
04:17		16-34	-18	12 SWORDS S free throw 1 - 2 made (5)
04:17		16-35	-19	12 SWORDS S free throw 2 - 2 made (6)
04:11	15 MORIARTY K turnover lost ball (1)			
04:11	15 MORIARTY K substitution out			
04:11	2 NISSLEY L substitution in			
04:02				12 SWORDS S turnover travel (1)
03:44	40 MARKOWSKI A 2pt FG from turnover in the paint, jump shot missed			
03:43	offensive rebound (15)			
03:43	2 NISSLEY L turnover bad pass (2)			5 Q. DANIELS B steal (2)
03:41	33 HARGROVE A foul shooting (2 - 3)			5 Q. DANIELS B foul drawn (1)
03:41		16-36	-20	5 Q. DANIELS B free throw 1 - 1 made (1)
03:30				3 HOLLOWAY M turnover lane violation (1)
03:30	23 PRINCE B 3pt FG from turnover, jump shot missed			
03:27	32 COLEY K offensive rebound (1)			
03:15	23 PRINCE B 2pt FG second chance outside the paint, jump shot made (6)	18-36	-18	
03:06	40 MARKOWSKI A foul shooting (1 - 4)			12 SWORDS S foul drawn (2)
03:06		18-37	-19	12 SWORDS S free throw 1 - 2 made (7)
03:06		18-38	-20	12 SWORDS S free throw 2 - 2 made (8)
03:03	2 NISSLEY L turnover lost ball (3)			3 HOLLOWAY M steal (1)
03:03	33 HARGROVE A substitution out			
03:03	14 HAKE C substitution in			
03:03	23 PRINCE B steal (1)			3 HOLLOWAY M turnover bad pass (2)



Official Basketball Play by Play - 2nd Period  
**Michigan at Nebraska**  
02/06/25 Pinnacle Bank Arena, Lincoln  
2024-25 Women's Basketball

Game Time: 7:02 PM  
Game Duration: 1:52  
Attendance: 5,617

Officials: Jesse Dickerson, Nykesha Thompson, Chuck Gonzalez

Game Time	UNL	Score	Diff	MIC
02:41	32 COLEY K 3pt FG from turnover, jump shot made (3)	21-38	-17	
02:41	23 PRINCE B assist (1)			
02:31		21-40	-19	12 SWORDS S 2pt FG in the paint, layup made (10)
02:22	14 HAKE C foul drawn (1)			5 Q. DANIELS B foul personal (1 - 3)
02:09	2 NISSLEY L 3pt FG , jump shot missed			
02:06				10 HOBBS J defensive rebound (6)
01:56		21-42	-21	12 SWORDS S 2pt FG in the paint, layup made (12)
01:33	23 PRINCE B 3pt FG , jump shot missed			
01:30	32 COLEY K offensive rebound (2)			
01:12	40 MARKOWSKI A turnover 3 seconds (2)			
00:56				10 HOBBS J 3pt FG from turnover, jump shot missed
00:53	defensive rebound (18)			
00:39	23 PRINCE B 2pt FG in the paint, jump shot blocked			
00:39				5 Q. DANIELS B block (1)
00:39	23 PRINCE B offensive rebound (1)			
00:39	2 NISSLEY L substitution out			
00:39	5 RIMDAL A substitution in			
00:35	40 MARKOWSKI A 2pt FG second chance in the paint, jump shot missed			
00:33				10 HOBBS J defensive rebound (7)
00:08				11 KAMPSCHROEDER G 3pt FG , jump shot missed
00:07	defensive rebound (20)			
00:07				3 HOLLOWAY M substitution out
00:07				33 DELFOSSE T substitution in
00:02	32 COLEY K turnover travel (1)			
END OF PERIOD				
UNL 21-42 MIC				





Officials: Jesse Dickerson, Nykesha Thompson, Chuck Gonzalez

Michigan - 24

				FG	3P	FT	Rebounds			Fouls		TP	AS	TO	ST	Blocks		
NO.	Name		Min	M-A	M-A	M-A	OR	DR	TOT	PF	FD					BS	BA	+/-
1	Olivia Olson	G	05:05	1-2	1-1	0-0	0	2	2	1	0	3	1	0	0	0	0	15
3	Mila Holloway	G	06:51	0-1	0-0	0-0	1	0	1	0	1	0	1	2	1	0	1	9
10	Jordan Hobbs	G	09:29	1-3	0-1	0-0	0	4	4	0	0	2	1	0	0	0	0	17
11	Greta Kampschroeder	G	08:28	0-1	0-1	0-0	0	2	2	1	0	0	1	0	0	1	0	10
12	Syla Swords	G	06:58	3-3	0-0	4-4	0	0	0	0	2	10	1	1	0	0	0	9
55	Yulia Grabovskaia		02:03	1-1	0-0	0-0	0	1	1	0	0	2	0	0	0	0	0	7
5	Brooke Q. Daniels		07:57	0-0	0-0	1-1	0	0	0	1	1	1	0	0	1	1	0	10
33	Te'Yala Delfosse		03:09	3-3	0-0	0-0	0	0	0	0	0	6	0	0	0	0	0	8
Team							0	0	0			0		0				
Totals				9-14	1-3	5-5	1	9	10	3	4	24	5	3	2	2	1	17

Shooting By Period			
2 <sup>nd</sup> FG%	9-14	64.3%	
3PT%	1-3	33.3%	
FT%	5-5	100%	
GM FG%	9-14	64.3%	
3PT%	1-3	33.3%	
FT%	5-5	100.0%	

Dead Ball Rebounds: 0, 0

Technical Fouls: NONE

Nebraska - 7

NO.	Name		Min	FG		3P		FT		Rebounds			Fouls		TP	AS	TO	ST	Blocks		+/-
				M-A	M-A	M-A	M-A	OR	DR	TOT	PF	FD							BS	BA	
12	Jessica Petrie	F	03:02	0-0	0-0	0-0	0	0	0	0	0	0	0	0	0	0	0	0	0	0	-8
40	Alexis Markowski	C	08:16	0-5	0-1	0-0	0	2	2	1	2	0	0	1	0	0	1	0	0	0	-10
14	Callin Hake	G	07:25	0-1	0-0	0-0	0	0	0	0	1	0	0	0	0	0	0	0	0	0	-16
15	Kendall Moriarty	G	00:44	0-0	0-0	0-0	0	0	0	0	0	0	0	0	0	1	0	0	0	0	0
23	Britt Prince	G	10:00	2-6	0-3	0-0	1	0	1	1	0	4	1	0	1	1	0	1	1	1	-17
5	Alberte Rimdal		04:39	0-0	0-0	0-0	0	0	0	0	0	0	0	0	0	1	0	0	0	0	-11
33	Amiah Hargrove		03:55	0-0	0-0	0-0	0	0	0	1	0	0	0	0	0	0	0	0	0	0	-8
44	Petra Bozan		01:44	0-1	0-0	0-0	0	0	0	0	0	0	0	0	0	1	0	0	0	0	-7
32	Kendall Coley		05:38	1-1	1-1	0-0	2	0	2	1	0	3	0	1	0	0	0	0	0	0	-2
2	Logan Nissley		04:37	0-2	0-1	0-0	0	0	0	0	0	0	0	0	0	2	0	0	0	1	-6
Team								1	2	3		0			0						
Totals				3-16	1-6	0-0	4	4	8	4	3	7	1	7	1	7	1	1	1	2	-17

Shooting By Period			
2 <sup>nd</sup> FG%	3-16	18.8%	
3PT%	1-6	16.7%	
FT%	0-0	0%	
GM FG%	3-16	18.8%	
3PT%	1-6	16.7%	
FT%	0-0	0.0%	

Dead Ball Rebounds: 0, 0

Technical Fouls: NONE

	MIC	UNL
Biggest lead	21 (2 <sup>nd</sup> 1:56)	0 (1 <sup>st</sup> 10:00)
Best Scoring Run	15 (2 <sup>nd</sup> 5:41)	3 (2 <sup>nd</sup> 2:41)
Lead Changes	0	
Times Tied	0	
Time with Lead	09:36	00:00

Points from	MIC	UNL
Turnovers	3	3
Paint	16	0
Second Chance	2	2
Fast Breaks	4	0
Bench	9	3

Period by Period Scoring					
	1st	2nd	3rd	4th	TOT
MIC	18	24	16	20	78
UNL	14	7	21	18	60



Officials: Jesse Dickerson, Nykesha Thompson, Chuck Gonzalez

Michigan - 42

NO.	Name		Min	FG			3P			FT			Rebounds			Fouls		TP	AS	TO	ST	Blocks		+/-
				M-A	M-A	M-A	M-A	M-A	M-A	OR	DR	TOT	PF	FD								BS	BA	
1	Olivia Olson	G	13:41	2-7	1-1	0-0	0	3	3	2	1	5	1	1	0	1	0	1	0	0	17	0	0	
3	Mila Holloway	G	16:31	2-5	1-2	0-0	2	0	2	0	1	5	3	2	1	0	1	12				0	1	
10	Jordan Hobbs	G	17:36	3-8	1-4	1-1	0	7	7	0	1	8	2	0	1	1	0	19				1	0	
11	Greta Kampschroeder	G	17:30	1-2	1-2	0-0	0	2	2	1	0	3	1	0	1	1	0	14				1	0	
12	Syla Swords	G	15:31	4-6	0-0	4-4	0	2	2	1	2	12	1	1	0	0	0	10				0	0	
55	Yulia Grabovskaia		04:54	1-1	0-0	0-0	0	1	1	1	0	2	0	1	0	0	0	9				0	0	
5	Brooke Q. Daniels		09:41	0-0	0-0	1-1	0	0	0	1	1	1	0	0	2	1	0	13				1	0	
33	Te'Yala Delfosse		04:36	3-4	0-0	0-0	0	0	0	0	0	6	0	0	0	0	0	11				0	0	
Team							0	0	0			0			0									
Totals				16-33	4-9	6-6	2	15	17	6	6	42	8	4	6	3	1	21						

Shooting By Period		
1 <sup>st</sup> FG%	7-19	36.8%
3PT%	3-6	50.0%
FT%	1-1	100%
2 <sup>nd</sup> FG%	9-14	64.3%
3PT%	1-3	33.3%
FT%	5-5	100%
GM FG%	16-33	48.5%
3PT%	4-9	44.4%
FT%	6-6	100.0%

Dead Ball Rebounds: 0, 0

Technical Fouls: NONE

Nebraska - 21

NO.	Name		Min	FG			3P			FT			Rebounds			Fouls		TP	AS	TO	ST	Blocks		+/-
				M-A	M-A	M-A	M-A	M-A	M-A	OR	DR	TOT	PF	FD								BS	BA	
12	Jessica Petrie	F	10:51	1-1	0-0	0-0	0	2	2	0	0	2	0	0	2	0	0	-9				0	0	
40	Alexis Markowski	C	17:04	3-9	1-2	3-4	0	4	4	1	4	10	0	2	0	0	0	-14				0	0	
14	Callin Hake	G	14:18	0-2	0-0	0-0	0	1	1	0	1	0	3	2	0	0	0	-22				0	0	
15	Kendall Moriarty	G	06:21	0-0	0-0	0-0	0	0	0	1	0	0	1	1	0	0	0	-1				0	0	
23	Britt Prince	G	18:24	3-9	0-3	0-0	1	0	1	1	0	6	1	2	1	1	1	-19				1	1	
5	Alberte Rimdal		09:22	0-0	0-0	0-0	0	0	0	0	0	0	0	1	0	0	0	-11				0	0	
2	Logan Nissley		08:59	0-3	0-2	0-0	0	3	3	0	0	0	0	3	0	0	1	-9				0	0	
33	Amiah Hargrove		07:18	0-2	0-0	0-0	1	2	3	2	1	0	0	1	0	0	1	-11				0	0	
44	Petra Bozan		01:44	0-1	0-0	0-0	0	0	0	0	0	0	0	0	1	0	0	-7				0	0	
32	Kendall Coley		05:38	1-1	1-1	0-0	2	0	2	1	0	3	0	1	0	0	0	-2				0	0	
Team							1	3	4			0			0									
Totals				8-28	2-8	3-4	5	15	20	6	6	21	5	14	1	1	3	-21						

Shooting By Period		
1 <sup>st</sup> FG%	5-12	41.7%
3PT%	1-2	50.0%
FT%	3-4	75%
2 <sup>nd</sup> FG%	3-16	18.8%
3PT%	1-6	16.7%
FT%	0-0	0%
GM FG%	8-28	28.6%
3PT%	2-8	25.0%
FT%	3-4	75.0%

Dead Ball Rebounds: 1, 0

Technical Fouls: NONE

	MIC	UNL
Biggest lead	21 (2 <sup>nd</sup> 1:56)	2 (1 <sup>st</sup> 9:42)
Best Scoring Run	18 (2 <sup>nd</sup> 5:41)	3 (1 <sup>st</sup> 7:14)
Lead Changes	9	
Times Tied	1	
Time with Lead	14:06	05:36

Points from	MIC	UNL
Turnovers	8	3
Paint	24	6
Second Chance	4	2
Fast Breaks	4	0
Bench	9	3

Period by Period Scoring					
	1st	2nd	3rd	4th	TOT
MIC	18	24	16	20	78
UNL	14	7	21	18	60



Officials: Jesse Dickerson, Nykesha Thompson, Chuck Gonzalez

### Period 3

#### Period Starters:

UNL	12 Petrie J	14 Hake C	15 Moriarty K	23 Prince B	40 Markowski A
MIC	1 Olson O	3 Holloway M	10 Hobbs J	11 Kampschroeder G	12 Swords S

Game Time	UNL	Score	Diff	MIC
10:00	5 RINDAL A substitution out			
10:00	32 COLEY K substitution out			
10:00	12 PETRIE J substitution in			
10:00	15 MORIARTY K substitution in			
10:00				5 Q. DANIELS B substitution out
10:00				33 DELFOSSE T substitution out
10:00				1 OLSON O substitution in
10:00				3 HOLLOWAY M substitution in
09:43				12 SWORDS S 3pt FG , jump shot missed
09:40	23 PRINCE B defensive rebound (2)			
09:31	15 MORIARTY K 2pt FG in the paint, layup made (2)	23-42	-19	
09:13				10 HOBBS J 3pt FG , jump shot missed
09:11	40 MARKOWSKI A defensive rebound (5)			
09:00	23 PRINCE B 2pt FG in the paint, jump shot made (8)	25-42	-17	
09:00	23 PRINCE B foul drawn (1)			3 HOLLOWAY M foul shooting (1 - 1)
09:00	23 PRINCE B free throw 1 - 1 made (9)	26-42	-16	
08:46				3 HOLLOWAY M 2pt FG outside the paint, jump shot missed
08:44	40 MARKOWSKI A defensive rebound (6)			
08:35	12 PETRIE J 2pt FG in the paint, layup missed			
08:32	23 PRINCE B offensive rebound (3)			
08:25	40 MARKOWSKI A 2pt FG second chance in the paint, jump shot blocked			
08:25				11 KAMPSCHROEDER G block (2)
08:25	offensive rebound (25)			
08:20	12 PETRIE J 2pt FG second chance in the paint, layup made (4)	28-42	-14	
08:20	40 MARKOWSKI A assist (1)			
08:08	40 MARKOWSKI A steal (1)			1 OLSON O turnover lost ball (1)
08:03	23 PRINCE B foul drawn (2)			3 HOLLOWAY M foul shooting (2 - 2)
08:03				3 HOLLOWAY M substitution out
08:03				5 Q. DANIELS B substitution in
08:03	23 PRINCE B free throw fast break 1 - 2 missed			
08:03	offensive dead ball rebound (2)			
08:03	23 PRINCE B free throw fast break 2 - 2 made (10)	29-42	-13	
07:58				Timeout 30 Sec
07:58	Timeout media			
07:51		29-45	-16	11 KAMPSCHROEDER G 3pt FG , jump shot made (6)
07:51				10 HOBBS J assist (3)
07:33	40 MARKOWSKI A 2pt FG in the paint, layup made (12)	31-45	-14	
07:33	23 PRINCE B assist (2)			
07:33	40 MARKOWSKI A foul drawn (5)			11 KAMPSCHROEDER G foul shooting (2 - 3)
07:33	40 MARKOWSKI A free throw 1 - 1 made (13)	32-45	-13	
07:02		32-47	-15	1 OLSON O 2pt FG in the paint, layup made (7)
06:40	12 PETRIE J 2pt FG in the paint, layup made (6)	34-47	-13	



Official Basketball PlaybyPlay - 3rd Period  
**Michigan at Nebraska**  
02/06/25 Pinnacle Bank Arena, Lincoln  
2024-25 Women's Basketball

Game Time: 7:02 PM  
Game Duration: 1:52  
Attendance: 5,617

Officials: Jesse Dickerson, Nykesha Thompson, Chuck Gonzalez

Game Time	UNL	Score	Diff	MIC
06:21				11 KAMPSCHROEDER G 3pt FG , jump shot missed
06:18				12 SWORDS S offensive rebound (3)
06:16				10 HOBBS J 2pt FG second chance in the paint, jump shot missed
06:13	40 MARKOWSKI A defensive rebound (7)			
06:13	40 MARKOWSKI A foul drawn (6)			10 HOBBS J foul loose ball (1 - 4)
06:13				11 KAMPSCHROEDER G substitution out
06:13				55 GRABOVSKAIA Y substitution in
05:55	40 MARKOWSKI A foul drawn (7)			55 GRABOVSKAIA Y foul shooting (2 - 5)
05:55	40 MARKOWSKI A free throw 1 - 2 made (14)	35-47	-12	
05:55	40 MARKOWSKI A free throw 2 - 2 missed			
05:53	12 PETRIE J offensive rebound (3)			
05:43	15 MORIARTY K 2pt FG second chance in the paint, layup made (4)	37-47	-10	
05:20	14 HAKE C foul personal (1 - 1)			1 OLSON O foul drawn (2)
05:20	40 MARKOWSKI A substitution out			
05:20	44 BOZAN P substitution in			
05:20				5 Q. DANIELS B substitution out
05:20				12 SWORDS S substitution out
05:20				3 HOLLOWAY M substitution in
05:20				33 DELFOSSE T substitution in
05:20	12 PETRIE J foul drawn (1)			55 GRABOVSKAIA Y foul offensive (3 - 6)
05:20				55 GRABOVSKAIA Y turnover offensive (2)
05:20				55 GRABOVSKAIA Y substitution out
05:20				21 VANTIMMEREN A substitution in
05:06	12 PETRIE J 2pt FG from turnover outside the paint, jump shot missed			
05:03				21 VANTIMMEREN A defensive rebound (1)
04:47	Timeout media			
04:47	15 MORIARTY K substitution out			
04:47	32 COLEY K substitution in			
04:35				10 HOBBS J 3pt FG , jump shot missed
04:32				offensive rebound (20)
04:30	44 BOZAN P steal (1)			3 HOLLOWAY M turnover bad pass (3)
04:15	44 BOZAN P 2pt FG from turnover in the paint, layup missed			
04:15				33 DELFOSSE T defensive rebound (1)
04:15	32 COLEY K foul loose ball (2 - 2)			33 DELFOSSE T foul drawn (1)
04:15	44 BOZAN P substitution out			
04:15	40 MARKOWSKI A substitution in			
03:59	14 HAKE C foul drawn (2)			1 OLSON O foul offensive (3 - 7)
03:59				1 OLSON O turnover offensive (2)
03:43	40 MARKOWSKI A 2pt FG from turnover in the paint, layup missed			
03:42				10 HOBBS J defensive rebound (8)
03:42	23 PRINCE B foul loose ball (2 - 3)			10 HOBBS J foul drawn (2)
03:42				1 OLSON O substitution out
03:42				21 VANTIMMEREN A substitution out
03:42				11 KAMPSCHROEDER G substitution in
03:42				12 SWORDS S substitution in
03:21				12 SWORDS S 2pt FG in the paint, jump shot missed



Official Basketball Playby Play - 3rd Period  
**Michigan at Nebraska**  
02/06/25 Pinnacle Bank Arena, Lincoln  
2024-25 Women's Basketball

Game Time: 7:02 PM  
Game Duration: 1:52  
Attendance: 5,617

Officials: Jesse Dickerson, Nykesha Thompson, Chuck Gonzalez

Game Time	UNL	Score	Diff	MIC
03:21				33 DELFOSSE T offensive rebound (2)
03:21		37-49	-12	33 DELFOSSE T 2pt FG second chance in the paint, jump shot made (8)
03:21	32 COLEY K foul shooting (3 - 4)			33 DELFOSSE T foul drawn (2)
03:21		37-50	-13	33 DELFOSSE T free throw 1 - 1 made (9)
03:08	40 MARKOWSKI A foul drawn (8)			11 KAMPSCHROEDER G foul shooting (3 - 8)
03:08	32 COLEY K substitution out			
03:08	2 NISSLEY L substitution in			
03:08	40 MARKOWSKI A free throw 1 - 2 missed			
03:08	offensive dead ball rebound (3)			
03:08	40 MARKOWSKI A free throw 2 - 2 made (15)	38-50	-12	
02:50		38-52	-14	10 HOBBS J 2pt FG outside the paint, jump shot made (10)
02:36	23 PRINCE B 2pt FG in the paint, layup missed			
02:34	40 MARKOWSKI A offensive rebound (8)			
02:33	40 MARKOWSKI A 2pt FG second chance in the paint, layup made (17)	40-52	-12	
02:25		40-54	-14	10 HOBBS J 2pt FG in the paint, layup made (12)
02:25	12 PETRIE J foul shooting (1 - 5)			10 HOBBS J foul drawn (3)
02:25	12 PETRIE J substitution out			
02:25	33 HARGROVE A substitution in			
02:24				10 HOBBS J free throw 1 - 1 missed
02:22				12 SWORDS S offensive rebound (4)
02:18	23 PRINCE B foul personal (3 - 6)			3 HOLLOWAY M foul drawn (2)
02:18		40-55	-15	3 HOLLOWAY M free throw fast break 1 - 2 made (6)
02:17				3 HOLLOWAY M free throw fast break 2 - 2 missed
02:16	33 HARGROVE A defensive rebound (4)			
02:08	23 PRINCE B 2pt FG outside the paint, jump shot missed			
02:05	2 NISSLEY L offensive rebound (4)			
01:48	14 HAKE C 2pt FG second chance in the paint, layup made (2)	42-55	-13	
01:38				33 DELFOSSE T 2pt FG in the paint, jump shot missed
01:36	40 MARKOWSKI A defensive rebound (9)			
01:29	14 HAKE C foul offensive (2 - 7)			33 DELFOSSE T foul drawn (3)
01:29	14 HAKE C turnover offensive (3)			
01:09				10 HOBBS J 2pt FG from turnover in the paint, layup missed
01:07	40 MARKOWSKI A defensive rebound (10)			
01:03	14 HAKE C 3pt FG , jump shot missed			
00:59				11 KAMPSCHROEDER G defensive rebound (3)
00:34		42-58	-16	11 KAMPSCHROEDER G 3pt FG , jump shot made (9)
00:34				12 SWORDS S assist (2)
00:04	23 PRINCE B turnover bad pass (3)			3 HOLLOWAY M steal (2)
00:01	14 HAKE C foul drawn (3)			3 HOLLOWAY M foul offensive (3 - 9)
00:01				3 HOLLOWAY M turnover offensive (4)
00:01	14 HAKE C substitution out			
00:01	5 RIMDAL A substitution in			
END OF PERIOD				
UNL 42-58 MIC				



Official Basketball Box Score - 3rd Period  
**Michigan at Nebraska**  
02/06/25 Pinnacle Bank Arena, Lincoln  
2024-25 Women's Basketball

Game Time: 7:02 PM  
Game Duration: 1:52  
Attendance: 5,617

Officials: Jesse Dickerson, Nykesha Thompson, Chuck Gonzalez

**Michigan - 16**

NO.	Name		Min	FG		3P		FT		Rebounds			Fouls		TP	AS	TO	ST	Blocks		+/-
				M-A	M-A	M-A	M-A	OR	DR	TOT	PF	FD							BS	BA	
1	Olivia Olson	G	06:18	1-1	0-0	0-0	0-0	0	0	0	1	1	2	0	2	0	2	0	0	0	-11
3	Mila Holloway	G	07:17	0-1	0-0	1-2	0	0	0	0	3	1	1	0	2	1	0	0	0	0	-1
10	Jordan Hobbs	G	10:00	2-6	0-2	0-1	0	1	1	1	1	2	4	1	0	0	0	0	0	0	-5
11	Greta Kampschroeder	G	07:29	2-3	2-3	0-0	0	1	1	2	2	0	6	0	0	0	0	1	0	0	-2
12	Syla Swords	G	08:22	0-2	0-1	0-0	2	0	2	0	0	0	0	1	0	0	0	0	0	0	-5
5	Brooke Q. Daniels		02:43	0-0	0-0	0-0	0	0	0	0	0	0	0	0	0	0	0	0	0	0	-4
55	Yulia Grabovskaia		00:53	0-0	0-0	0-0	0	0	0	0	2	0	0	0	0	1	0	0	0	0	-3
21	Ally VanTimmeren		01:38	0-0	0-0	0-0	0	1	1	0	0	0	0	0	0	0	0	0	0	0	0
33	Te'Yala Delfosse		05:20	1-2	0-0	1-1	1	1	2	0	0	3	3	0	0	0	0	0	0	0	6
Team								1	0	1			0			0					
Totals				6-15	2-6	2-4	4	4	8	9	7	16	2	5	1	1	0	1	0	0	-5

Shooting By Period		
3rd FG%	6-15	40.0%
3PT%	2-6	33.3%
FT%	2-4	50%
GMFG%	6-15	40.0%
3PT%	2-6	33.3%
FT%	2-4	50.0%

Dead Ball Rebounds: 0, 0

Technical Fouls: NONE

**Nebraska - 21**

NO.	Name		Min	FG		3P		FT		Rebounds			Fouls		TP	AS	TO	ST	Blocks		+/-
				M-A	M-A	M-A	M-A	OR	DR	TOT	PF	FD							BS	BA	
12	Jessica Petrie	F	07:35	2-4	0-0	0-0	1	0	1	1	1	1	4	0	0	0	0	0	0	0	7
40	Alexis Markowski	C	08:55	2-4	0-0	3-5	1	5	6	0	4	7	7	1	0	1	0	1	0	1	5
14	Callin Hake	G	09:59	1-2	0-1	0-0	0	0	0	0	2	2	2	0	1	0	0	0	0	0	5
15	Kendall Moriarty	G	05:13	2-2	0-0	0-0	0	0	0	0	0	0	4	0	0	0	0	0	0	0	11
23	Britt Prince	G	10:00	1-3	0-0	2-3	1	1	2	2	2	2	4	1	1	0	0	0	0	0	5
44	Petra Bozan		01:05	0-1	0-0	0-0	0	0	0	0	0	0	0	0	0	0	1	0	0	0	0
32	Kendall Coley		01:39	0-0	0-0	0-0	0	0	0	0	2	0	0	0	0	0	0	0	0	0	-3
2	Logan Nissley		03:08	0-0	0-0	0-0	1	0	1	0	0	0	0	0	0	0	0	0	0	0	-3
33	Amiah Hargrove		02:25	0-0	0-0	0-0	0	1	1	0	0	0	0	0	0	0	0	0	0	0	-2
5	Alberte Rimdal		00:01	0-0	0-0	0-0	0	0	0	0	0	0	0	0	0	0	0	0	0	0	0
Team								1	0	1			0			0					
Totals				8-16	0-1	5-8	5	7	12	7	9	21	2	2	2	2	0	1	0	1	5

Shooting By Period		
3rd FG%	8-16	50.0%
3PT%	0-1	0.0%
FT%	5-8	62.5%
GMFG%	8-16	50.0%
3PT%	0-1	0.0%
FT%	5-8	62.5%

Dead Ball Rebounds: 2, 0

Technical Fouls: NONE

	MIC	UNL
Biggest lead	21 (3 <sup>rd</sup> 9:43)	0 (1 <sup>st</sup> 10:00)
Best Scoring Run	3 (3 <sup>rd</sup> 7:51)	8 (3 <sup>rd</sup> 8:03)
Lead Changes	0	
Times Tied	0	
Time with Lead	09:43	00:00

	MIC	UNL
Points from		
Turnovers	0	1
Paint	6	16
Second Chance	4	8
Fast Breaks	1	1
Bench	3	0

Period by Period Scoring					
	1st	2nd	3rd	4th	TOT
MIC	18	24	16	20	78
UNL	14	7	21	18	60



Official Basketball Playby Play - 4th Period  
**Michigan at Nebraska**  
02/06/25 Pinnacle Bank Arena, Lincoln  
2024-25 Women's Basketball

Game Time: 7:02 PM  
Game Duration: 1:52  
Attendance: 5,617

Officials: Jesse Dickerson, Nykesha Thompson, Chuck Gonzalez

**Period 4**

**Period Starters:**

UNL	5 Rimdal A	12 Petrie J	15 Moriarty K	23 Prince B	40 Markowski A
MIC	3 Holloway M	10 Hobbs J	11 Kampschroeder G	12 Swords S	33 Delfosse T

Game Time	UNL	Score	Diff	MIC
10:00	2 NISSLEY L substitution out			
10:00	33 HARGROVE A substitution out			
10:00	12 PETRIE J substitution in			
10:00	15 MORIARTY K substitution in			
09:46	40 MARKOWSKI A 2pt FG in the paint, layup made (19)	44-58	-14	
09:46	12 PETRIE J assist (1)			
09:26		44-61	-17	11 KAMPSCHROEDER G 3pt FG , jump shot made (12)
09:26				12 SWORDS S assist (3)
09:05	40 MARKOWSKI A 2pt FG in the paint, layup missed			
09:04				10 HOBBS J defensive rebound (9)
09:04	15 MORIARTY K foul loose ball (2 - 1)			10 HOBBS J foul drawn (4)
08:50		44-64	-20	11 KAMPSCHROEDER G 3pt FG , jump shot made (15)
08:50				12 SWORDS S assist (4)
08:38	15 MORIARTY K foul drawn (1)			3 HOLLOWAY M foul shooting (4 - 1)
08:38				3 HOLLOWAY M substitution out
08:38				1 OLSON O substitution in
08:38	15 MORIARTY K free throw 1 - 2 missed			
08:38	offensive dead ball rebound (4)			
08:38	15 MORIARTY K free throw 2 - 2 missed			
08:36				10 HOBBS J defensive rebound (10)
08:28				11 KAMPSCHROEDER G 3pt FG , jump shot missed
08:26				33 DELFOSSE T offensive rebound (3)
08:21	23 PRINCE B foul shooting (4 - 2)			11 KAMPSCHROEDER G foul drawn (1)
08:21	23 PRINCE B substitution out			
08:21	14 HAKE C substitution in			
08:21				11 KAMPSCHROEDER G free throw 1 - 2 missed
08:21				offensive dead ball rebound (1)
08:21		44-65	-21	11 KAMPSCHROEDER G free throw 2 - 2 made (16)
08:05	15 MORIARTY K foul drawn (2)			33 DELFOSSE T foul personal (1 - 2)
07:54	5 RIMDAL A 3pt FG , jump shot missed			
07:51				12 SWORDS S defensive rebound (5)
07:26	5 RIMDAL A foul shooting (1 - 3)			1 OLSON O foul drawn (3)
07:26	40 MARKOWSKI A substitution out			
07:26	32 COLEY K substitution in			
07:26		44-66	-22	1 OLSON O free throw 1 - 2 made (8)
07:26				1 OLSON O free throw 2 - 2 missed
07:24	32 COLEY K defensive rebound (3)			
07:11	5 RIMDAL A foul drawn (1)			1 OLSON O foul personal (4 - 3)
07:11				1 OLSON O substitution out
07:11				5 Q. DANIELS B substitution in
07:07	32 COLEY K 2pt FG in the paint, layup made (5)	46-66	-20	
07:07	14 HAKE C assist (4)			
06:43		46-69	-23	12 SWORDS S 3pt FG , pull up jump shot made (15)





Official Basketball PlaybyPlay - 4th Period  
**Michigan at Nebraska**  
02/06/25 Pinnacle Bank Arena, Lincoln  
2024-25 Women's Basketball

Game Time: 7:02 PM  
Game Duration: 1:52  
Attendance: 5,617

Officials: Jesse Dickerson, Nykesha Thompson, Chuck Gonzalez

Game Time	UNL	Score	Diff	MIC
06:28	32 COLEYK turnover bad pass (2)			
06:11				12 SWORDS S 3pt FG from turnover, jump shot missed
06:08	15 MORIARTYK defensive rebound (1)			
05:58	15 MORIARTYK 2pt FG in the paint, layup missed			
05:58				33 DELFOSSE T defensive rebound (4)
05:58	32 COLEYK foul loose ball (4 - 4)			33 DELFOSSE T foul drawn (4)
05:58	14 HAKE C substitution out			
05:58	15 MORIARTYK substitution out			
05:58	2 NISSLEY L substitution in			
05:58	23 PRINCE B substitution in			
05:58				11 KAMPSCHROEDER G substitution out
05:58				21 VANTIMMEREN A substitution in
05:37		46-71	-25	10 HOBBS J 2pt FG in the paint, layup made (14)
05:17	2 NISSLEY L 2pt FG in the paint, driving layup made (2)	48-71	-23	
05:17	2 NISSLEY L foul drawn (1)			33 DELFOSSE T foul shooting (2 - 4)
05:17	2 NISSLEY L free throw 1 - 1 missed			
05:16				5 Q. DANIELS B defensive rebound (1)
05:05		48-73	-25	21 VANTIMMEREN A 2pt FG in the paint, layup made (2)
05:05				12 SWORDS S assist (5)
04:39	2 NISSLEY L foul drawn (2)			12 SWORDS S foul shooting (2 - 5)
04:39	Timeout media			
04:39	12 PETRIE J substitution out			
04:39	40 MARKOWSKI A substitution in			
04:39	2 NISSLEY L free throw 1 - 2 made (3)	49-73	-24	
04:39	2 NISSLEY L free throw 2 - 2 made (4)	50-73	-23	
04:34				5 Q. DANIELS B turnover travel (1)
04:34				33 DELFOSSE T substitution out
04:34				2 BROWN M substitution in
04:19	2 NISSLEY L 2pt FG from turnover outside the paint, jump shot missed			
04:16				2 BROWN M defensive rebound (1)
04:11				2 BROWN M turnover travel (1)
04:11				5 Q. DANIELS B substitution out
04:11				10 HOBBS J substitution out
04:11				12 SWORDS S substitution out
04:11				1 OLSON O substitution in
04:11				3 HOLLOWAY M substitution in
04:11				20 CROCKETT A substitution in
03:59	32 COLEYK 3pt FG from turnover, jump shot missed			
03:56				2 BROWN M defensive rebound (2)
03:49				1 OLSON O 2pt FG in the paint, jump shot missed
03:47	40 MARKOWSKI A defensive rebound (11)			
03:42	5 RIMDAL A 3pt FG , jump shot missed			
03:39				1 OLSON O defensive rebound (4)
03:31				3 HOLLOWAY M 3pt FG , jump shot missed
03:30				21 VANTIMMEREN A offensive rebound (2)
03:30	40 MARKOWSKI A foul loose ball (2 - 5)			21 VANTIMMEREN A foul drawn (1)
03:30		50-74	-24	21 VANTIMMEREN A free throw 1 - 2 made (3)
03:30		50-75	-25	21 VANTIMMEREN A free throw 2 - 2 made (4)





Official Basketball Playby Play - 4th Period  
**Michigan at Nebraska**  
02/06/25 Pinnacle Bank Arena, Lincoln  
2024-25 Women's Basketball

Game Time: 7:02 PM  
Game Duration: 1:52  
Attendance: 5,617

Officials: Jesse Dickerson, Nykesha Thompson, Chuck Gonzalez

Game Time	UNL	Score	Diff	MIC
03:19	40 MARKOWSKI A 2pt FG in the paint, layup made (21)	52-75	-23	
03:19	23 PRINCE B assist (3)			
02:52		52-77	-25	21 VANTIMMEREN A 2pt FG in the paint, layup made (6)
02:52				20 CROCKETT A assist (1)
02:27	5 RIMDAL A foul drawn (2)			21 VANTIMMEREN A foul shooting (1 - 6)
02:27	40 MARKOWSKI A substitution out			
02:27	44 BOZAN P substitution in			
02:27	5 RIMDAL A free throw 1 - 2 made (1)	53-77	-24	
02:27	5 RIMDAL A free throw 2 - 2 missed			
02:26				1 OLSON O defensive rebound (5)
02:09				1 OLSON O 2pt FG in the paint, jump shot blocked
02:09	32 COLEY K block (1)			
02:06				offensive rebound (37)
02:02	2 NISSLEY L steal (1)			1 OLSON O turnover lost ball (3)
01:50	44 BOZAN P foul drawn (1)			21 VANTIMMEREN A foul shooting (2 - 7)
01:50	44 BOZAN P free throw 1 - 2 made (1)	54-77	-23	
01:50	44 BOZAN P free throw 2 - 2 made (2)	55-77	-22	
01:29	5 RIMDAL A steal (1)			3 HOLLOWAY M turnover lost ball (5)
01:15	44 BOZAN P 2pt FG from turnover in the paint, layup missed			
01:13	2 NISSLEY L offensive rebound (5)			
01:12	23 PRINCE B 3pt FG from turnover second chance, jump shot missed			
01:09				3 HOLLOWAY M defensive rebound (3)
01:04	44 BOZAN P foul shooting (1 - 6)			2 BROWN M foul drawn (1)
01:04	23 PRINCE B substitution out			
01:04	14 HAKE C substitution in			
01:04				21 VANTIMMEREN A substitution out
01:04				55 GRABOVSKAIA Y substitution in
01:04				2 BROWN M free throw fast break 1 - 2 missed
01:04				offensive dead ball rebound (2)
01:04		55-78	-23	2 BROWN M free throw fast break 2 - 2 made (1)
00:48	44 BOZAN P 2pt FG in the paint, layup made (4)	57-78	-21	
00:48	14 HAKE C assist (5)			
00:28				1 OLSON O 2pt FG outside the paint, jump shot missed
00:26	14 HAKE C defensive rebound (2)			
00:15	2 NISSLEY L 3pt FG, jump shot missed			
00:10	5 RIMDAL A offensive rebound (1)			
00:13	14 HAKE C 3pt FG second chance, jump shot made (5)	60-78	-18	
00:13	32 COLEY K assist (1)			
END OF GAME				
UNL 60-78 MIC				



Officials: Jesse Dickerson, Nykesha Thompson, Chuck Gonzalez

Michigan - 20

NO.	Name		Min	FG M-A	3P M-A	FT M-A	Rebounds			Fouls		TP	AS	TO	ST	Blocks		+/-
							OR	DR	TOT	PF	FD					BS	BA	
1	Olivia Olson	G	05:38	0-3	0-0	1-2	0	2	2	1	1	1	0	1	0	0	1	-3
3	Mila Holloway	G	05:33	0-1	0-1	0-0	0	1	1	1	0	0	0	1	0	0	0	-1
10	Jordan Hobbs	G	05:49	1-1	0-0	0-0	0	2	2	0	1	2	0	0	0	0	0	7
11	Greta Kampschroeder	G	04:02	2-3	2-3	1-2	0	0	0	0	1	7	0	0	0	0	0	7
12	Syla Swords	G	05:49	1-2	1-2	0-0	0	1	1	1	0	3	3	0	0	0	0	7
33	Te'Yala Delfosse		05:26	0-0	0-0	0-0	1	1	2	2	1	0	0	0	0	0	0	7
5	Brooke Q. Daniels		03:00	0-0	0-0	0-0	0	1	1	0	0	0	0	1	0	0	0	1
21	Ally VanTimmeren		04:54	2-2	0-0	2-2	1	0	1	2	1	6	0	0	0	0	0	-1
2	Macy Brown		04:34	0-0	0-0	1-2	0	2	2	0	1	1	0	1	0	0	0	-5
20	Alyssa Crockett		04:11	0-0	0-0	0-0	0	0	0	0	0	0	1	0	0	0	0	-5
55	Yulia Grabovskaia		01:04	0-0	0-0	0-0	0	0	0	0	0	0	0	0	0	0	0	-4
Team							1	0	1			0		0				
Totals				6-12	3-6	5-8	3	10	13	7	6	20	4	4	0	0	1	2

Shooting By Period		
4 <sup>th</sup> FG%	6-12	50.0%
3PT%	3-6	50.0%
FT%	5-8	62.5%
GMFG%	6-12	50.0%
3PT%	3-6	50.0%
FT%	5-8	62.5%

Dead Ball Rebounds: 2, 0

Technical Fouls: NONE

Nebraska - 18

NO.	Name		Min	FG M-A	3P M-A	FT M-A	Rebounds			Fouls		TP	AS	TO	ST	Blocks		+/-
							OR	DR	TOT	PF	FD					BS	BA	
12	Jessica Petrie	F	05:21	0-0	0-0	0-0	0	0	0	0	0	0	1	0	0	0	0	-9
40	Alexis Markowski	C	04:46	2-3	0-0	0-0	0	1	1	1	0	4	0	0	0	0	0	-5
14	Callin Hake	G	03:27	1-1	1-1	0-0	0	1	1	0	0	3	2	0	0	0	0	1
15	Kendall Moriarty	G	04:02	0-1	0-0	0-2	0	1	1	1	2	0	0	0	0	0	0	-7
23	Britt Prince	G	06:33	0-1	0-1	0-0	0	0	0	1	0	0	1	0	0	0	0	-3
5	Alberte Rimdal		10:00	0-2	0-2	1-2	1	0	1	1	2	1	0	0	1	0	0	-2
33	Amiah Hargrove		00:00	0-0	0-0	0-0	0	0	0	0	0	0	0	0	0	0	0	0
32	Kendall Coley		07:26	1-2	0-1	0-0	0	1	1	1	0	2	1	1	0	1	0	3
2	Logan Nissley		05:58	1-3	0-1	2-3	1	0	1	0	2	4	0	0	1	0	0	5
44	Petra Bozan		02:27	1-2	0-0	2-2	0	0	0	1	1	4	0	0	0	0	0	7
Team							0	0	0			0		0				
Totals				6-15	1-6	5-9	2	4	6	6	7	18	5	1	2	1	0	-2

Shooting By Period		
4 <sup>th</sup> FG%	6-15	40.0%
3PT%	1-6	16.7%
FT%	5-9	55.6%
GMFG%	6-15	40.0%
3PT%	1-6	16.7%
FT%	5-9	55.6%

Dead Ball Rebounds: 1, 0

Technical Fouls: NONE

	MIC	UNL
Biggest lead	25 (4 <sup>th</sup> 5:37)	0 (1 <sup>st</sup> 10:00)
Best Scoring Run	8 (4 <sup>th</sup> 7:26)	5 (4 <sup>th</sup> 0:13)
Lead Changes	0	
Times Tied	0	
Time with Lead	09:46	00:00

	MIC	UNL
Points from		
Turnovers	0	2
Paint	6	10
Second Chance	3	3
Fast Breaks	1	0
Bench	7	11

Period by Period Scoring					
	1st	2nd	3rd	4th	TOT
MIC	18	24	16	20	78
UNL	14	7	21	18	60



Officials: Jesse Dickerson, Nykesha Thompson, Chuck Gonzalez

Michigan - 36

NO.	Name	Min	FG M-A	3P M-A	FT M-A	Rebounds			Fouls		TP	AS	TO	ST	Blocks		+/-
						OR	DR	TOT	PF	FD					BS	BA	
1	Olivia Olson	G 11:56	1-4	0-0	1-2	0	2	2	2	2	3	0	3	0	0	1	-14
3	Mila Holloway	G 12:50	0-2	0-1	1-2	0	1	1	4	1	1	0	3	1	0	0	-2
10	Jordan Hobbs	G 15:49	3-7	0-2	0-1	0	3	3	1	3	6	1	0	0	0	0	2
11	Greta Kampschroeder	G 11:31	4-6	4-6	1-2	0	1	1	2	1	13	0	0	0	1	0	5
12	Syla Swords	G 14:11	1-4	1-3	0-0	2	1	3	1	0	3	4	0	0	0	0	2
5	Brooke Q. Daniels	05:43	0-0	0-0	0-0	0	1	1	0	0	0	0	1	0	0	0	-3
55	Yulia Grabovskaia	01:57	0-0	0-0	0-0	0	0	0	2	0	0	0	1	0	0	0	-7
21	Ally VanTimmeren	06:32	2-2	0-0	2-2	1	1	2	2	1	6	0	0	0	0	0	-1
33	Te'Yala Delfosse	10:46	1-2	0-0	1-1	2	2	4	2	4	3	0	0	0	0	0	13
2	Macy Brown	04:34	0-0	0-0	1-2	0	2	2	0	1	1	0	1	0	0	0	-5
20	Alyssa Crockett	04:11	0-0	0-0	0-0	0	0	0	0	0	0	1	0	0	0	0	-5
Team						2	0	2			0		0				
Totals			12-27	5-12	7-12	7	14	21	16	13	36	6	9	1	1	1	-3

Shooting By Period		
3 <sup>rd</sup> FG%	6-15	40.0%
3PT%	2-6	33.3%
FT%	2-4	50%
4 <sup>th</sup> FG%	6-12	50.0%
3PT%	3-6	50.0%
FT%	5-8	62.5%
GM FG%	12-27	44.4%
3PT%	5-12	41.7%
FT%	7-12	58.3%

Dead Ball Rebounds: 2, 0

Technical Fouls: NONE

Nebraska - 39

NO.	Name	Min	FG M-A	3P M-A	FT M-A	Rebounds			Fouls		TP	AS	TO	ST	Blocks		+/-
						OR	DR	TOT	PF	FD					BS	BA	
12	Jessica Petrie	F 12:56	2-4	0-0	0-0	1	0	1	1	1	4	1	0	0	0	0	-2
40	Alexis Markowski	C 13:41	4-7	0-0	3-5	1	6	7	1	4	11	1	0	1	0	1	0
14	Callin Hake	G 13:26	2-3	1-2	0-0	0	1	1	2	2	5	2	1	0	0	0	6
15	Kendall Moriarty	G 09:15	2-3	0-0	0-2	0	1	1	1	2	4	0	0	0	0	0	4
23	Britt Prince	G 16:33	1-4	0-1	2-3	1	1	2	3	2	4	2	1	0	0	0	2
44	Petra Bozan	03:32	1-3	0-0	2-2	0	0	0	1	1	4	0	0	1	0	0	7
32	Kendall Coley	09:05	1-2	0-1	0-0	0	1	1	3	0	2	1	1	0	1	0	0
2	Logan Nissley	09:06	1-3	0-1	2-3	2	0	2	0	2	4	0	0	1	0	0	2
33	Amiah Hargrove	02:25	0-0	0-0	0-0	0	1	1	0	0	0	0	0	0	0	0	-2
5	Alberte Rimdal	10:01	0-2	0-2	1-2	1	0	1	1	2	1	0	0	1	0	0	-2
Team						1	0	1			0		0				
Totals			14-31	1-7	10-17	7	11	18	13	16	39	7	3	4	1	1	3

Shooting By Period		
3 <sup>rd</sup> FG%	8-16	50.0%
3PT%	0-1	0.0%
FT%	5-8	62.5%
4 <sup>th</sup> FG%	6-15	40.0%
3PT%	1-6	16.7%
FT%	5-9	55.6%
GM FG%	14-31	45.2%
3PT%	1-7	14.3%
FT%	10-17	58.8%

Dead Ball Rebounds: 3, 0

Technical Fouls: NONE

	MIC	UNL
Biggest lead	25 (4 <sup>th</sup> 5:37)	0 (1 <sup>st</sup> 10:00)
Best Scoring Run	8 (4 <sup>th</sup> 7:26)	8 (3 <sup>rd</sup> 8:03)
Lead Changes	0	
Times Tied	0	
Time with Lead	19:43	00:00

	MIC	UNL
Points from		
Turnovers	0	3
Paint	12	26
Second Chance	7	11
Fast Breaks	2	1
Bench	10	11

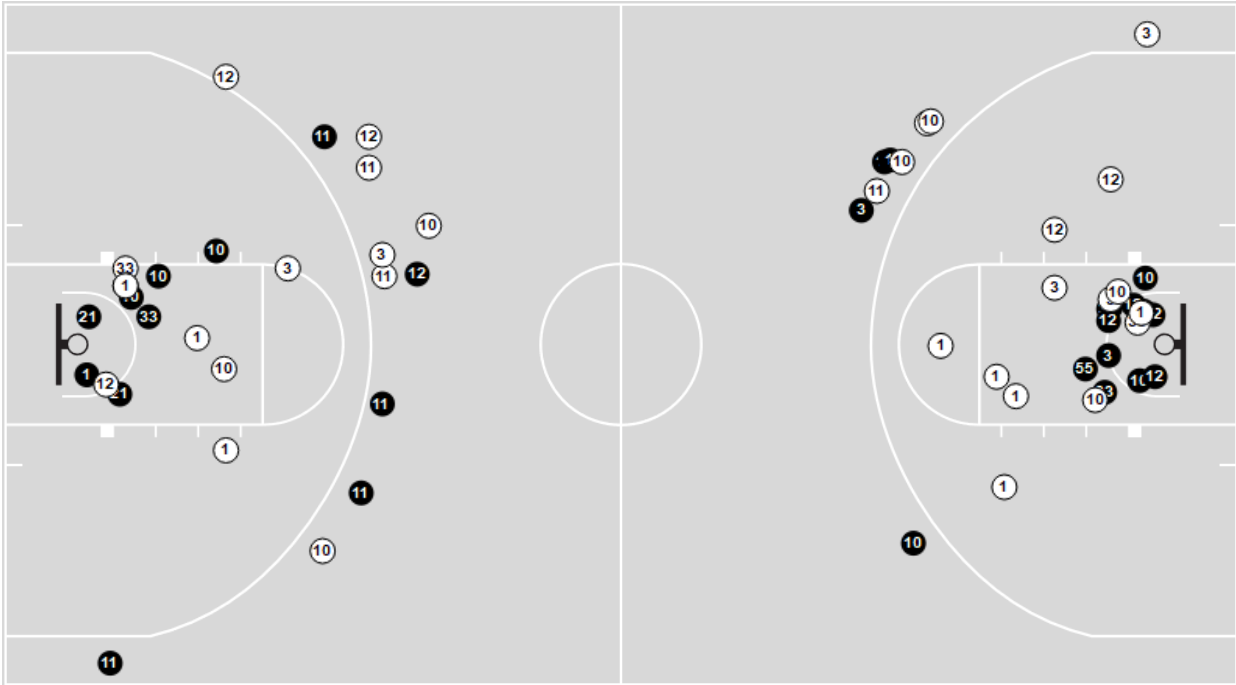
Period by Period Scoring					
	1st	2nd	3rd	4th	TOT
MIC	18	24	16	20	78
UNL	14	7	21	18	60



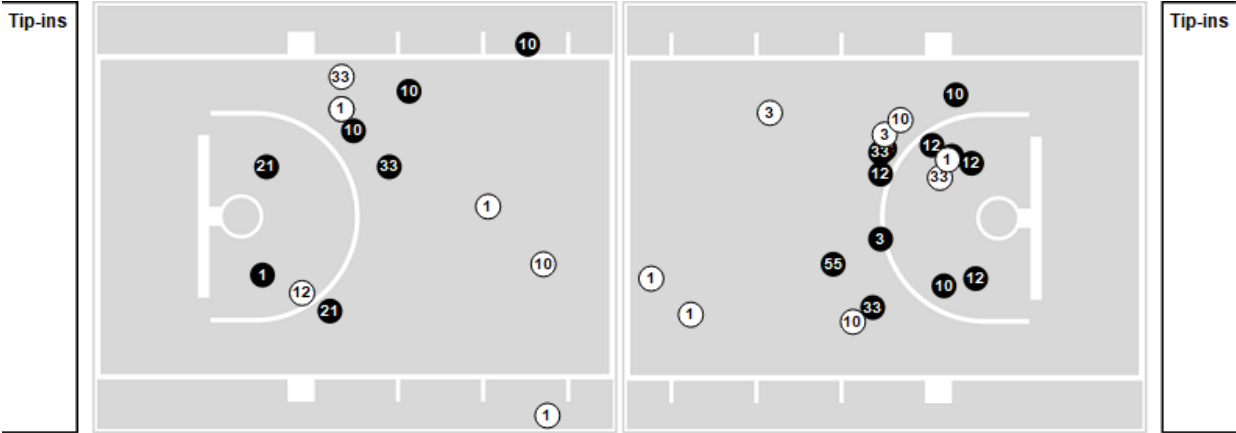
Officials: Jesse Dickerson, Nykesha Thompson, Chuck Gonzalez

Players => All ; FG Types => All ; Results => All ;  
**Michigan**

All Field Goals



Shots in the Paint



**N** Made    **N** Missed    N - Player Number

Michigan	M/A	%
Field Goals	28/60	47
2 Points	19/39	49
3 Points	9/21	43
Free Throws	13/18	72

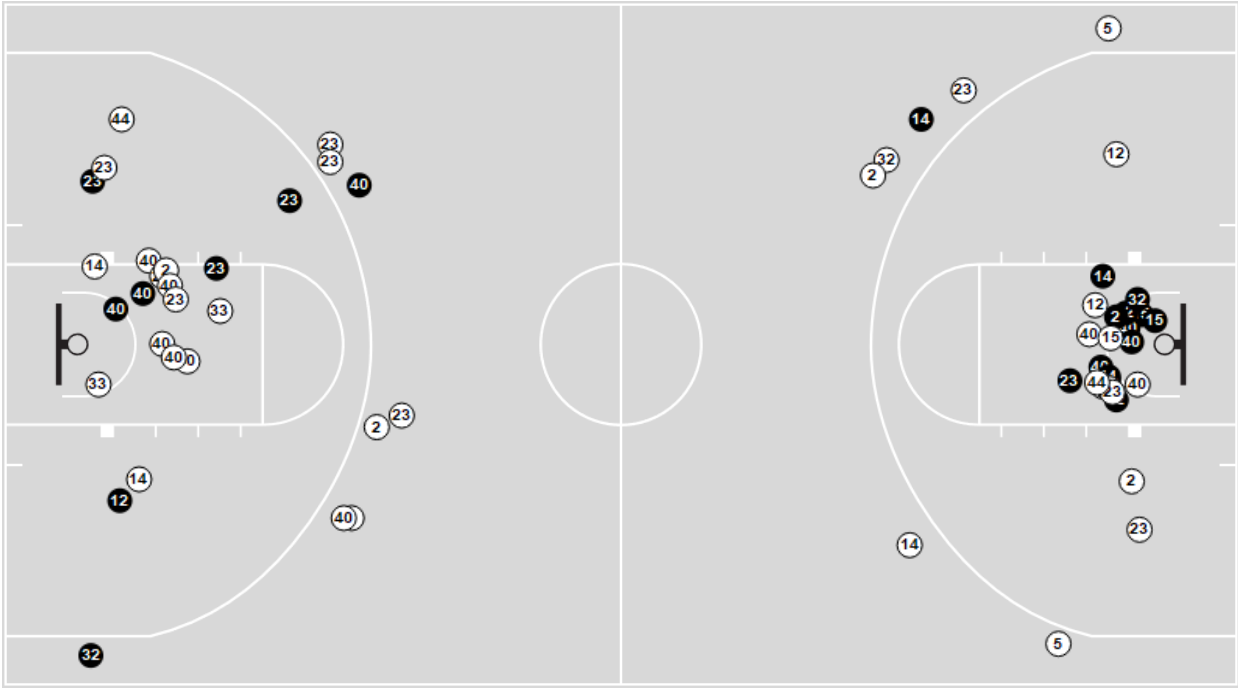
Michigan	M/A	%
Points in the Paint	36 (18/32)	56
Fast Break Points	6 (4/7)	57
Second Chance Points	11 (9/12)	75
Effective FG%	54	



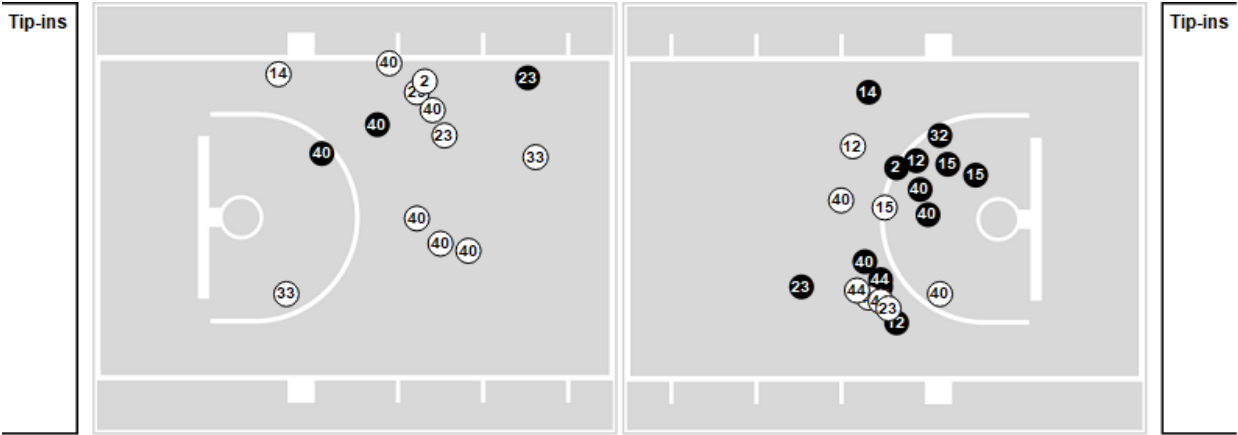
Officials: Jesse Dickerson, Nykesha Thompson, Chuck Gonzalez

Players => All ; FG Types => All ; Results => All ;  
**Nebraska**

All Field Goals



Shots in the Paint



**N** Made    **N** Missed    N - Player Number

Nebraska	M/A	%
Field Goals	22/59	37
2 Points	19/44	43
3 Points	3/15	20
Free Throws	13/21	62

Nebraska	M/A	%
Points in the Paint	32 (16/34)	47
Fast Break Points	1 (1/2)	50
Second Chance Points	13 (6/10)	60
Effective FG%	40	